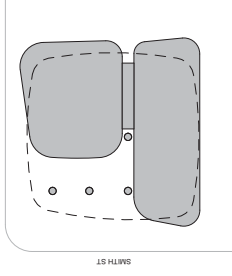


REVISION	DATE	BY	CHKD	DESCRIPTION
01	02.02.2018	DWT	RMS	PRELIMINARY
02	17.02.2017	BB	BB	PRELIMINARY
03	08.02.2017	BB	BB	PRELIMINARY
04	08.02.2017	BB	BB	PRELIMINARY
05	11.02.2017	BB	BB	DEVELOPMENT APPLICATION
06	20.02.2017	BB	BB	DEVELOPMENT APPLICATION FOR COUNCIL
07	08.12.2017	BB	BB	DEVELOPMENT APPLICATION FOR COUNCIL - REVISED
08	21.11.2017	BB	BB	DEVELOPMENT APPLICATION FOR COUNCIL - REVISED
09	02.02.2018	BB	BB	DEVELOPMENT APPLICATION FOR COUNCIL - REVISED



KEY TO MATERIALS LISTEN KEY

- 1. REINFORCED CONCRETE
- 2. REINFORCED CONCRETE WITH POLYPROPYLENE FIBRE
- 3. REINFORCED CONCRETE WITH POLYPROPYLENE FIBRE
- 4. REINFORCED CONCRETE WITH POLYPROPYLENE FIBRE
- 5. REINFORCED CONCRETE WITH POLYPROPYLENE FIBRE
- 6. REINFORCED CONCRETE WITH POLYPROPYLENE FIBRE
- 7. REINFORCED CONCRETE WITH POLYPROPYLENE FIBRE
- 8. REINFORCED CONCRETE WITH POLYPROPYLENE FIBRE
- 9. REINFORCED CONCRETE WITH POLYPROPYLENE FIBRE
- 10. REINFORCED CONCRETE WITH POLYPROPYLENE FIBRE
- 11. REINFORCED CONCRETE WITH POLYPROPYLENE FIBRE
- 12. REINFORCED CONCRETE WITH POLYPROPYLENE FIBRE
- 13. REINFORCED CONCRETE WITH POLYPROPYLENE FIBRE
- 14. REINFORCED CONCRETE WITH POLYPROPYLENE FIBRE
- 15. REINFORCED CONCRETE WITH POLYPROPYLENE FIBRE
- 16. REINFORCED CONCRETE WITH POLYPROPYLENE FIBRE
- 17. REINFORCED CONCRETE WITH POLYPROPYLENE FIBRE
- 18. REINFORCED CONCRETE WITH POLYPROPYLENE FIBRE
- 19. REINFORCED CONCRETE WITH POLYPROPYLENE FIBRE
- 20. REINFORCED CONCRETE WITH POLYPROPYLENE FIBRE
- 21. REINFORCED CONCRETE WITH POLYPROPYLENE FIBRE
- 22. REINFORCED CONCRETE WITH POLYPROPYLENE FIBRE
- 23. REINFORCED CONCRETE WITH POLYPROPYLENE FIBRE
- 24. REINFORCED CONCRETE WITH POLYPROPYLENE FIBRE
- 25. REINFORCED CONCRETE WITH POLYPROPYLENE FIBRE
- 26. REINFORCED CONCRETE WITH POLYPROPYLENE FIBRE
- 27. REINFORCED CONCRETE WITH POLYPROPYLENE FIBRE
- 28. REINFORCED CONCRETE WITH POLYPROPYLENE FIBRE
- 29. REINFORCED CONCRETE WITH POLYPROPYLENE FIBRE
- 30. REINFORCED CONCRETE WITH POLYPROPYLENE FIBRE
- 31. REINFORCED CONCRETE WITH POLYPROPYLENE FIBRE
- 32. REINFORCED CONCRETE WITH POLYPROPYLENE FIBRE
- 33. REINFORCED CONCRETE WITH POLYPROPYLENE FIBRE
- 34. REINFORCED CONCRETE WITH POLYPROPYLENE FIBRE
- 35. REINFORCED CONCRETE WITH POLYPROPYLENE FIBRE
- 36. REINFORCED CONCRETE WITH POLYPROPYLENE FIBRE
- 37. REINFORCED CONCRETE WITH POLYPROPYLENE FIBRE
- 38. REINFORCED CONCRETE WITH POLYPROPYLENE FIBRE
- 39. REINFORCED CONCRETE WITH POLYPROPYLENE FIBRE
- 40. REINFORCED CONCRETE WITH POLYPROPYLENE FIBRE
- 41. REINFORCED CONCRETE WITH POLYPROPYLENE FIBRE
- 42. REINFORCED CONCRETE WITH POLYPROPYLENE FIBRE
- 43. REINFORCED CONCRETE WITH POLYPROPYLENE FIBRE
- 44. REINFORCED CONCRETE WITH POLYPROPYLENE FIBRE
- 45. REINFORCED CONCRETE WITH POLYPROPYLENE FIBRE
- 46. REINFORCED CONCRETE WITH POLYPROPYLENE FIBRE
- 47. REINFORCED CONCRETE WITH POLYPROPYLENE FIBRE
- 48. REINFORCED CONCRETE WITH POLYPROPYLENE FIBRE
- 49. REINFORCED CONCRETE WITH POLYPROPYLENE FIBRE
- 50. REINFORCED CONCRETE WITH POLYPROPYLENE FIBRE
- 51. REINFORCED CONCRETE WITH POLYPROPYLENE FIBRE
- 52. REINFORCED CONCRETE WITH POLYPROPYLENE FIBRE
- 53. REINFORCED CONCRETE WITH POLYPROPYLENE FIBRE
- 54. REINFORCED CONCRETE WITH POLYPROPYLENE FIBRE
- 55. REINFORCED CONCRETE WITH POLYPROPYLENE FIBRE
- 56. REINFORCED CONCRETE WITH POLYPROPYLENE FIBRE
- 57. REINFORCED CONCRETE WITH POLYPROPYLENE FIBRE
- 58. REINFORCED CONCRETE WITH POLYPROPYLENE FIBRE
- 59. REINFORCED CONCRETE WITH POLYPROPYLENE FIBRE
- 60. REINFORCED CONCRETE WITH POLYPROPYLENE FIBRE
- 61. REINFORCED CONCRETE WITH POLYPROPYLENE FIBRE
- 62. REINFORCED CONCRETE WITH POLYPROPYLENE FIBRE
- 63. REINFORCED CONCRETE WITH POLYPROPYLENE FIBRE
- 64. REINFORCED CONCRETE WITH POLYPROPYLENE FIBRE
- 65. REINFORCED CONCRETE WITH POLYPROPYLENE FIBRE
- 66. REINFORCED CONCRETE WITH POLYPROPYLENE FIBRE
- 67. REINFORCED CONCRETE WITH POLYPROPYLENE FIBRE
- 68. REINFORCED CONCRETE WITH POLYPROPYLENE FIBRE
- 69. REINFORCED CONCRETE WITH POLYPROPYLENE FIBRE
- 70. REINFORCED CONCRETE WITH POLYPROPYLENE FIBRE
- 71. REINFORCED CONCRETE WITH POLYPROPYLENE FIBRE
- 72. REINFORCED CONCRETE WITH POLYPROPYLENE FIBRE
- 73. REINFORCED CONCRETE WITH POLYPROPYLENE FIBRE
- 74. REINFORCED CONCRETE WITH POLYPROPYLENE FIBRE
- 75. REINFORCED CONCRETE WITH POLYPROPYLENE FIBRE
- 76. REINFORCED CONCRETE WITH POLYPROPYLENE FIBRE
- 77. REINFORCED CONCRETE WITH POLYPROPYLENE FIBRE
- 78. REINFORCED CONCRETE WITH POLYPROPYLENE FIBRE
- 79. REINFORCED CONCRETE WITH POLYPROPYLENE FIBRE
- 80. REINFORCED CONCRETE WITH POLYPROPYLENE FIBRE
- 81. REINFORCED CONCRETE WITH POLYPROPYLENE FIBRE
- 82. REINFORCED CONCRETE WITH POLYPROPYLENE FIBRE
- 83. REINFORCED CONCRETE WITH POLYPROPYLENE FIBRE
- 84. REINFORCED CONCRETE WITH POLYPROPYLENE FIBRE
- 85. REINFORCED CONCRETE WITH POLYPROPYLENE FIBRE
- 86. REINFORCED CONCRETE WITH POLYPROPYLENE FIBRE
- 87. REINFORCED CONCRETE WITH POLYPROPYLENE FIBRE
- 88. REINFORCED CONCRETE WITH POLYPROPYLENE FIBRE
- 89. REINFORCED CONCRETE WITH POLYPROPYLENE FIBRE
- 90. REINFORCED CONCRETE WITH POLYPROPYLENE FIBRE
- 91. REINFORCED CONCRETE WITH POLYPROPYLENE FIBRE
- 92. REINFORCED CONCRETE WITH POLYPROPYLENE FIBRE
- 93. REINFORCED CONCRETE WITH POLYPROPYLENE FIBRE
- 94. REINFORCED CONCRETE WITH POLYPROPYLENE FIBRE
- 95. REINFORCED CONCRETE WITH POLYPROPYLENE FIBRE
- 96. REINFORCED CONCRETE WITH POLYPROPYLENE FIBRE
- 97. REINFORCED CONCRETE WITH POLYPROPYLENE FIBRE
- 98. REINFORCED CONCRETE WITH POLYPROPYLENE FIBRE
- 99. REINFORCED CONCRETE WITH POLYPROPYLENE FIBRE
- 100. REINFORCED CONCRETE WITH POLYPROPYLENE FIBRE

FENDER KATSALIDIS
 WWW.FKARCHITECTURE.COM
 110 LINDSAY STREET, SYDNEY NSW 1585
 NEW SOUTH WALES 2000 AUSTRALIA
 TELEPHONE: +61 2 8762 3000
 FACSIMILE: +61 2 8762 3001
 ARCHITECTS IN ASSOCIATION WITH THE AUSTRALIAN ARCHITECTS ASSOCIATION
 A/C/006/043/002

QUALITY ASSURANCE (ISSUED CONTINUED)
 THE PROJECT IS SUBJECT TO THE PLANNING ASSURANCE SYSTEM
 (PASS) REQUIREMENTS FOR THIS PROJECT AS COMPLETED.
 THE PASS REQUIREMENTS FOR THIS PROJECT ARE TO BE COMPLETED
 BY THE ARCHITECT AND THE CLIENT.
 THE DRAWINGS SHALL BE SUBJECT TO THE DRAWINGS NOT TO BE CONSIDERED
 AS A CONTRACT DOCUMENT UNLESS SPECIFICALLY REFERRED TO IN THE CONTRACT.
 ANY SUBJECT TO THE PASS REQUIREMENTS.

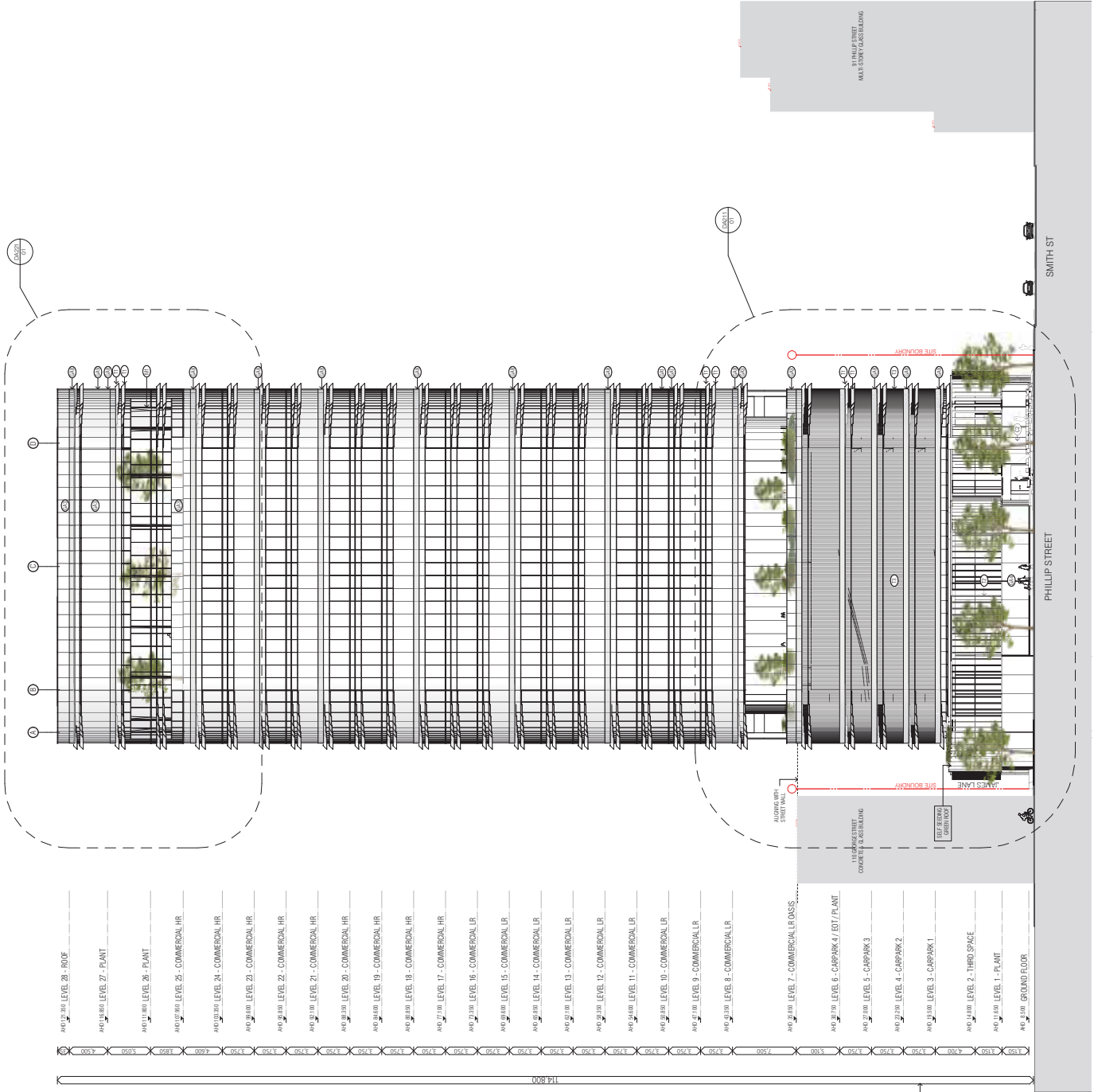
NOTES
 THE DRAWINGS CONTRACTOR SHALL BEAR THE RESPONSIBILITY FOR THE PROVISION OF ALL MATERIALS AND WORKMANSHIP TO BE PROVIDED TO THE PROJECT.
 CHECK ALL WORK FOR COMPLIANCE WITH ALL APPLICABLE STANDARDS AND REGULATIONS.
 THE DRAWINGS SHALL BE SUBJECT TO THE DRAWINGS NOT TO BE CONSIDERED
 AS A CONTRACT DOCUMENT UNLESS SPECIFICALLY REFERRED TO IN THE CONTRACT.
 ANY SUBJECT TO THE PASS REQUIREMENTS.

DATE	DATE	DATE	DATE
02.02.2018	02.02.2018	01.02.2018	17.02.2018

PROJECT
 32 SMITH ST, OPT REDEVELOPMENT
 32 SMITH ST & 93-95 PHILLIP ST
 PARRAMATTA NSW 2150

SCALE
 DEVELOPMENT APPLICATION
 1:500@A3

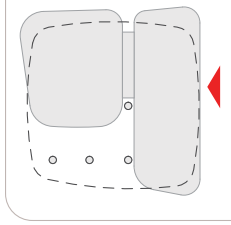
REV.
 08
DA202



NORTH ELEVATION (DA)
 SCALE 1:500@A3

REVISION

NO.	DATE	DESCRIPTION
1	21/11/2017	ISSUE FOR PERMIT
2	21/11/2017	ISSUE FOR PERMIT
3	21/11/2017	ISSUE FOR PERMIT
4	21/11/2017	ISSUE FOR PERMIT
5	21/11/2017	ISSUE FOR PERMIT
6	21/11/2017	ISSUE FOR PERMIT
7	21/11/2017	ISSUE FOR PERMIT
8	21/11/2017	ISSUE FOR PERMIT
9	21/11/2017	ISSUE FOR PERMIT
10	21/11/2017	ISSUE FOR PERMIT
11	21/11/2017	ISSUE FOR PERMIT
12	21/11/2017	ISSUE FOR PERMIT
13	21/11/2017	ISSUE FOR PERMIT
14	21/11/2017	ISSUE FOR PERMIT
15	21/11/2017	ISSUE FOR PERMIT
16	21/11/2017	ISSUE FOR PERMIT
17	21/11/2017	ISSUE FOR PERMIT
18	21/11/2017	ISSUE FOR PERMIT
19	21/11/2017	ISSUE FOR PERMIT
20	21/11/2017	ISSUE FOR PERMIT
21	21/11/2017	ISSUE FOR PERMIT
22	21/11/2017	ISSUE FOR PERMIT
23	21/11/2017	ISSUE FOR PERMIT
24	21/11/2017	ISSUE FOR PERMIT
25	21/11/2017	ISSUE FOR PERMIT
26	21/11/2017	ISSUE FOR PERMIT
27	21/11/2017	ISSUE FOR PERMIT
28	21/11/2017	ISSUE FOR PERMIT
29	21/11/2017	ISSUE FOR PERMIT
30	21/11/2017	ISSUE FOR PERMIT
31	21/11/2017	ISSUE FOR PERMIT
32	21/11/2017	ISSUE FOR PERMIT
33	21/11/2017	ISSUE FOR PERMIT
34	21/11/2017	ISSUE FOR PERMIT
35	21/11/2017	ISSUE FOR PERMIT
36	21/11/2017	ISSUE FOR PERMIT
37	21/11/2017	ISSUE FOR PERMIT
38	21/11/2017	ISSUE FOR PERMIT
39	21/11/2017	ISSUE FOR PERMIT
40	21/11/2017	ISSUE FOR PERMIT
41	21/11/2017	ISSUE FOR PERMIT
42	21/11/2017	ISSUE FOR PERMIT
43	21/11/2017	ISSUE FOR PERMIT
44	21/11/2017	ISSUE FOR PERMIT
45	21/11/2017	ISSUE FOR PERMIT
46	21/11/2017	ISSUE FOR PERMIT
47	21/11/2017	ISSUE FOR PERMIT
48	21/11/2017	ISSUE FOR PERMIT
49	21/11/2017	ISSUE FOR PERMIT
50	21/11/2017	ISSUE FOR PERMIT
51	21/11/2017	ISSUE FOR PERMIT
52	21/11/2017	ISSUE FOR PERMIT
53	21/11/2017	ISSUE FOR PERMIT
54	21/11/2017	ISSUE FOR PERMIT
55	21/11/2017	ISSUE FOR PERMIT
56	21/11/2017	ISSUE FOR PERMIT
57	21/11/2017	ISSUE FOR PERMIT
58	21/11/2017	ISSUE FOR PERMIT
59	21/11/2017	ISSUE FOR PERMIT
60	21/11/2017	ISSUE FOR PERMIT
61	21/11/2017	ISSUE FOR PERMIT
62	21/11/2017	ISSUE FOR PERMIT
63	21/11/2017	ISSUE FOR PERMIT
64	21/11/2017	ISSUE FOR PERMIT
65	21/11/2017	ISSUE FOR PERMIT
66	21/11/2017	ISSUE FOR PERMIT
67	21/11/2017	ISSUE FOR PERMIT
68	21/11/2017	ISSUE FOR PERMIT
69	21/11/2017	ISSUE FOR PERMIT
70	21/11/2017	ISSUE FOR PERMIT
71	21/11/2017	ISSUE FOR PERMIT
72	21/11/2017	ISSUE FOR PERMIT
73	21/11/2017	ISSUE FOR PERMIT
74	21/11/2017	ISSUE FOR PERMIT
75	21/11/2017	ISSUE FOR PERMIT
76	21/11/2017	ISSUE FOR PERMIT
77	21/11/2017	ISSUE FOR PERMIT
78	21/11/2017	ISSUE FOR PERMIT
79	21/11/2017	ISSUE FOR PERMIT
80	21/11/2017	ISSUE FOR PERMIT
81	21/11/2017	ISSUE FOR PERMIT
82	21/11/2017	ISSUE FOR PERMIT
83	21/11/2017	ISSUE FOR PERMIT
84	21/11/2017	ISSUE FOR PERMIT
85	21/11/2017	ISSUE FOR PERMIT
86	21/11/2017	ISSUE FOR PERMIT
87	21/11/2017	ISSUE FOR PERMIT
88	21/11/2017	ISSUE FOR PERMIT
89	21/11/2017	ISSUE FOR PERMIT
90	21/11/2017	ISSUE FOR PERMIT
91	21/11/2017	ISSUE FOR PERMIT
92	21/11/2017	ISSUE FOR PERMIT
93	21/11/2017	ISSUE FOR PERMIT
94	21/11/2017	ISSUE FOR PERMIT
95	21/11/2017	ISSUE FOR PERMIT
96	21/11/2017	ISSUE FOR PERMIT
97	21/11/2017	ISSUE FOR PERMIT
98	21/11/2017	ISSUE FOR PERMIT
99	21/11/2017	ISSUE FOR PERMIT
100	21/11/2017	ISSUE FOR PERMIT



- REVISIONS**
- 1. REVISION 1: REVISION 1
 - 2. REVISION 2: REVISION 2
 - 3. REVISION 3: REVISION 3
 - 4. REVISION 4: REVISION 4
 - 5. REVISION 5: REVISION 5
 - 6. REVISION 6: REVISION 6
 - 7. REVISION 7: REVISION 7
 - 8. REVISION 8: REVISION 8
 - 9. REVISION 9: REVISION 9
 - 10. REVISION 10: REVISION 10
 - 11. REVISION 11: REVISION 11
 - 12. REVISION 12: REVISION 12
 - 13. REVISION 13: REVISION 13
 - 14. REVISION 14: REVISION 14
 - 15. REVISION 15: REVISION 15
 - 16. REVISION 16: REVISION 16
 - 17. REVISION 17: REVISION 17
 - 18. REVISION 18: REVISION 18
 - 19. REVISION 19: REVISION 19
 - 20. REVISION 20: REVISION 20
 - 21. REVISION 21: REVISION 21
 - 22. REVISION 22: REVISION 22
 - 23. REVISION 23: REVISION 23
 - 24. REVISION 24: REVISION 24
 - 25. REVISION 25: REVISION 25
 - 26. REVISION 26: REVISION 26
 - 27. REVISION 27: REVISION 27
 - 28. REVISION 28: REVISION 28
 - 29. REVISION 29: REVISION 29
 - 30. REVISION 30: REVISION 30
 - 31. REVISION 31: REVISION 31
 - 32. REVISION 32: REVISION 32
 - 33. REVISION 33: REVISION 33
 - 34. REVISION 34: REVISION 34
 - 35. REVISION 35: REVISION 35
 - 36. REVISION 36: REVISION 36
 - 37. REVISION 37: REVISION 37
 - 38. REVISION 38: REVISION 38
 - 39. REVISION 39: REVISION 39
 - 40. REVISION 40: REVISION 40
 - 41. REVISION 41: REVISION 41
 - 42. REVISION 42: REVISION 42
 - 43. REVISION 43: REVISION 43
 - 44. REVISION 44: REVISION 44
 - 45. REVISION 45: REVISION 45
 - 46. REVISION 46: REVISION 46
 - 47. REVISION 47: REVISION 47
 - 48. REVISION 48: REVISION 48
 - 49. REVISION 49: REVISION 49
 - 50. REVISION 50: REVISION 50
 - 51. REVISION 51: REVISION 51
 - 52. REVISION 52: REVISION 52
 - 53. REVISION 53: REVISION 53
 - 54. REVISION 54: REVISION 54
 - 55. REVISION 55: REVISION 55
 - 56. REVISION 56: REVISION 56
 - 57. REVISION 57: REVISION 57
 - 58. REVISION 58: REVISION 58
 - 59. REVISION 59: REVISION 59
 - 60. REVISION 60: REVISION 60
 - 61. REVISION 61: REVISION 61
 - 62. REVISION 62: REVISION 62
 - 63. REVISION 63: REVISION 63
 - 64. REVISION 64: REVISION 64
 - 65. REVISION 65: REVISION 65
 - 66. REVISION 66: REVISION 66
 - 67. REVISION 67: REVISION 67
 - 68. REVISION 68: REVISION 68
 - 69. REVISION 69: REVISION 69
 - 70. REVISION 70: REVISION 70
 - 71. REVISION 71: REVISION 71
 - 72. REVISION 72: REVISION 72
 - 73. REVISION 73: REVISION 73
 - 74. REVISION 74: REVISION 74
 - 75. REVISION 75: REVISION 75
 - 76. REVISION 76: REVISION 76
 - 77. REVISION 77: REVISION 77
 - 78. REVISION 78: REVISION 78
 - 79. REVISION 79: REVISION 79
 - 80. REVISION 80: REVISION 80
 - 81. REVISION 81: REVISION 81
 - 82. REVISION 82: REVISION 82
 - 83. REVISION 83: REVISION 83
 - 84. REVISION 84: REVISION 84
 - 85. REVISION 85: REVISION 85
 - 86. REVISION 86: REVISION 86
 - 87. REVISION 87: REVISION 87
 - 88. REVISION 88: REVISION 88
 - 89. REVISION 89: REVISION 89
 - 90. REVISION 90: REVISION 90
 - 91. REVISION 91: REVISION 91
 - 92. REVISION 92: REVISION 92
 - 93. REVISION 93: REVISION 93
 - 94. REVISION 94: REVISION 94
 - 95. REVISION 95: REVISION 95
 - 96. REVISION 96: REVISION 96
 - 97. REVISION 97: REVISION 97
 - 98. REVISION 98: REVISION 98
 - 99. REVISION 99: REVISION 99
 - 100. REVISION 100: REVISION 100

QUALITY ASSURANCE

The project is subject to the Quality Assurance System. Design Development Review for this project is yet to be completed. This document is therefore for project information only. This drawing is a working document and is not to be used for construction without review.

NOTES

Check all vertical dimensions against component of work. This drawing shall be read in conjunction with all other drawings, including those by other consultants, at final design stage. The information on this drawing is for information only and is not to be used for construction without review.

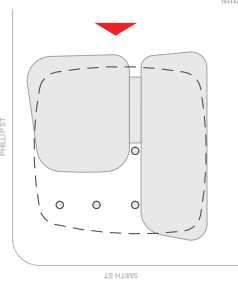
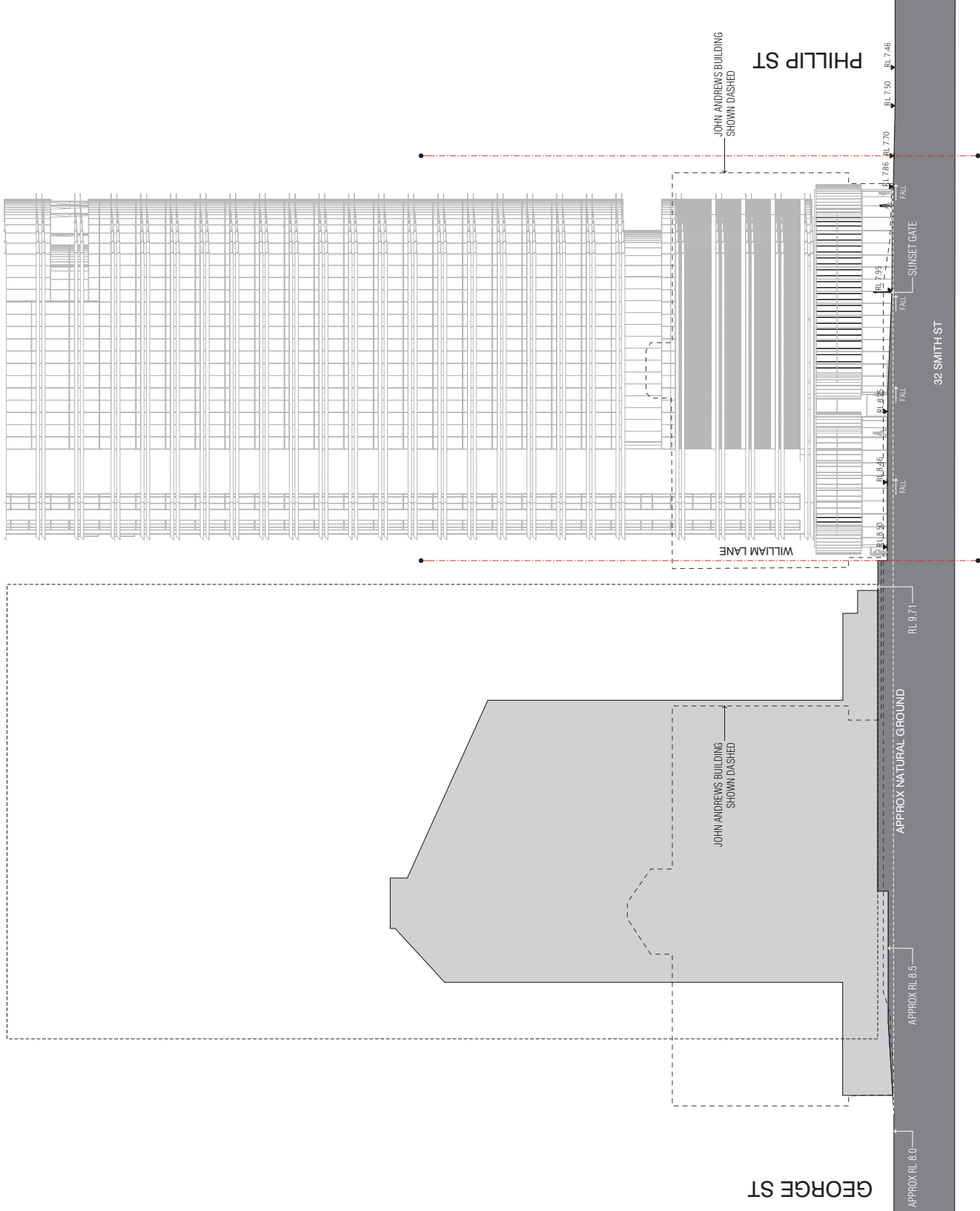
SCALE

1:500@A3

NO.	DATE	ISSUED BY	DATE	PROJECT	JOB NO.
1	21/11/2017	ALG	21/11/2017	10200	
2	21/11/2017	ALG	21/11/2017	10200	
3	21/11/2017	ALG	21/11/2017	10200	
4	21/11/2017	ALG	21/11/2017	10200	
5	21/11/2017	ALG	21/11/2017	10200	
6	21/11/2017	ALG	21/11/2017	10200	
7	21/11/2017	ALG	21/11/2017	10200	
8	21/11/2017	ALG	21/11/2017	10200	
9	21/11/2017	ALG	21/11/2017	10200	
10	21/11/2017	ALG	21/11/2017	10200	
11	21/11/2017	ALG	21/11/2017	10200	
12	21/11/2017	ALG	21/11/2017	10200	
13	21/11/2017	ALG	21/11/2017	10200	
14	21/11/2017	ALG	21/11/2017	10200	
15	21/11/2017	ALG	21/11/2017	10200	
16	21/11/2017	ALG	21/11/2017	10200	
17	21/11/2017	ALG	21/11/2017	10200	
18	21/11/2017	ALG	21/11/2017	10200	
19	21/11/2017	ALG	21/11/2017	10200	
20	21/11/2017	ALG	21/11/2017	10200	
21	21/11/2017	ALG	21/11/2017	10200	
22	21/11/2017	ALG	21/11/2017	10200	
23	21/11/2017	ALG	21/11/2017	10200	
24	21/11/2017	ALG	21/11/2017	10200	
25	21/11/2017	ALG	21/11/2017	10200	
26	21/11/2017	ALG	21/11/2017	10200	
27	21/11/2017	ALG	21/11/2017	10200	
28	21/11/2017	ALG	21/11/2017	10200	
29	21/11/2017	ALG	21/11/2017	10200	
30	21/11/2017	ALG	21/11/2017	10200	
31	21/11/2017	ALG	21/11/2017	10200	
32	21/11/2017	ALG	21/11/2017	10200	
33	21/11/2017	ALG	21/11/2017	10200	
34	21/11/2017	ALG	21/11/2017	10200	
35	21/11/2017	ALG	21/11/2017	10200	
36	21/11/2017	ALG	21/11/2017	10200	
37	21/11/2017	ALG	21/11/2017	10200	
38	21/11/2017	ALG	21/11/2017	10200	
39	21/11/2017	ALG	21/11/2017	10200	
40	21/11/2017	ALG	21/11/2017	10200	
41	21/11/2017	ALG	21/11/2017	10200	
42	21/11/2017	ALG	21/11/2017	10200	
43	21/11/2017	ALG	21/11/2017	10200	
44	21/11/2017	ALG	21/11/2017	10200	
45	21/11/2017	ALG	21/11/2017	10200	
46	21/11/2017	ALG	21/11/2017	10200	
47	21/11/2017	ALG	21/11/2017	10200	
48	21/11/2017	ALG	21/11/2017	10200	
49	21/11/2017	ALG	21/11/2017	10200	
50	21/11/2017	ALG	21/11/2017	10200	
51	21/11/2017	ALG	21/11/2017	10200	
52	21/11/2017	ALG	21/11/2017	10200	
53	21/11/2017	ALG	21/11/2017	10200	
54	21/11/2017	ALG	21/11/2017	10200	
55	21/11/2017	ALG	21/11/2017	10200	
56	21/11/2017	ALG	21/11/2017	10200	
57	21/11/2017	ALG	21/11/2017	10200	
58	21/11/2017	ALG	21/11/2017	10200	
59	21/11/2017	ALG	21/11/2017	10200	
60	21/11/2017	ALG	21/11/2017	10200	
61	21/11/2017	ALG	21/11/2017	10200	
62	21/11/2017	ALG	21/11/2017	10200	
63	21/11/2017	ALG	21/11/2017	10200	
64	21/11/2017	ALG	21/11/2017	10200	
65	21/11/2017	ALG	21/11/2017	10200	
66	21/11/2017	ALG	21/11/2017	10200	
67	21/11/2017	ALG	21/11/2017	10200	
68	21/11/2017	ALG	21/11/2017	10200	
69	21/11/2017	ALG	21/11/2017	10200	
70	21/11/2017	ALG	21/11/2017	10200	
71	21/11/2017	ALG	21/11/2017	10200	
72	21/11/2017	ALG	21/11/2017	10200	
73	21/11/2017	ALG	21/11/2017	10200	
74	21/11/2017	ALG	21/11/2017	10200	
75	21/11/2017	ALG	21/11/2017	10200	
76	21/11/2017	ALG	21/11/2017	10200	
77	21/11/2017	ALG	21/11/2017	10200	
78	21/11/2017	ALG	21/11/2017	10200	
79	21/11/2017	ALG	21/11/2017	10200	
80	21/11/2017	ALG	21/11/2017		

REVISION

NO.	DESCRIPTION	DATE
1.	ISSUED FOR PERMIT	23/11/2017
2.	ISSUED FOR PERMIT	23/11/2017



- EXTERIOR MATERIALS LEGEND**
- 1. REVEAL: MASONRY COURSE
 - 2. REVEAL: MASONRY COURSE
 - 3. REVEAL: MASONRY COURSE
 - 4. REVEAL: MASONRY COURSE
 - 5. REVEAL: MASONRY COURSE
 - 6. REVEAL: MASONRY COURSE
 - 7. REVEAL: MASONRY COURSE
 - 8. REVEAL: MASONRY COURSE
 - 9. REVEAL: MASONRY COURSE
 - 10. REVEAL: MASONRY COURSE
 - 11. REVEAL: MASONRY COURSE
 - 12. REVEAL: MASONRY COURSE
 - 13. REVEAL: MASONRY COURSE
 - 14. REVEAL: MASONRY COURSE
 - 15. REVEAL: MASONRY COURSE
 - 16. REVEAL: MASONRY COURSE
 - 17. REVEAL: MASONRY COURSE
 - 18. REVEAL: MASONRY COURSE
 - 19. REVEAL: MASONRY COURSE
 - 20. REVEAL: MASONRY COURSE
 - 21. REVEAL: MASONRY COURSE
 - 22. REVEAL: MASONRY COURSE
 - 23. REVEAL: MASONRY COURSE
 - 24. REVEAL: MASONRY COURSE
 - 25. REVEAL: MASONRY COURSE
 - 26. REVEAL: MASONRY COURSE
 - 27. REVEAL: MASONRY COURSE
 - 28. REVEAL: MASONRY COURSE
 - 29. REVEAL: MASONRY COURSE
 - 30. REVEAL: MASONRY COURSE
 - 31. REVEAL: MASONRY COURSE
 - 32. REVEAL: MASONRY COURSE
 - 33. REVEAL: MASONRY COURSE
 - 34. REVEAL: MASONRY COURSE
 - 35. REVEAL: MASONRY COURSE
 - 36. REVEAL: MASONRY COURSE
 - 37. REVEAL: MASONRY COURSE
 - 38. REVEAL: MASONRY COURSE
 - 39. REVEAL: MASONRY COURSE
 - 40. REVEAL: MASONRY COURSE
 - 41. REVEAL: MASONRY COURSE
 - 42. REVEAL: MASONRY COURSE
 - 43. REVEAL: MASONRY COURSE
 - 44. REVEAL: MASONRY COURSE
 - 45. REVEAL: MASONRY COURSE
 - 46. REVEAL: MASONRY COURSE
 - 47. REVEAL: MASONRY COURSE
 - 48. REVEAL: MASONRY COURSE
 - 49. REVEAL: MASONRY COURSE
 - 50. REVEAL: MASONRY COURSE
 - 51. REVEAL: MASONRY COURSE
 - 52. REVEAL: MASONRY COURSE
 - 53. REVEAL: MASONRY COURSE
 - 54. REVEAL: MASONRY COURSE
 - 55. REVEAL: MASONRY COURSE
 - 56. REVEAL: MASONRY COURSE
 - 57. REVEAL: MASONRY COURSE
 - 58. REVEAL: MASONRY COURSE
 - 59. REVEAL: MASONRY COURSE
 - 60. REVEAL: MASONRY COURSE
 - 61. REVEAL: MASONRY COURSE
 - 62. REVEAL: MASONRY COURSE
 - 63. REVEAL: MASONRY COURSE
 - 64. REVEAL: MASONRY COURSE
 - 65. REVEAL: MASONRY COURSE
 - 66. REVEAL: MASONRY COURSE
 - 67. REVEAL: MASONRY COURSE
 - 68. REVEAL: MASONRY COURSE
 - 69. REVEAL: MASONRY COURSE
 - 70. REVEAL: MASONRY COURSE
 - 71. REVEAL: MASONRY COURSE
 - 72. REVEAL: MASONRY COURSE
 - 73. REVEAL: MASONRY COURSE
 - 74. REVEAL: MASONRY COURSE
 - 75. REVEAL: MASONRY COURSE
 - 76. REVEAL: MASONRY COURSE
 - 77. REVEAL: MASONRY COURSE
 - 78. REVEAL: MASONRY COURSE
 - 79. REVEAL: MASONRY COURSE
 - 80. REVEAL: MASONRY COURSE
 - 81. REVEAL: MASONRY COURSE
 - 82. REVEAL: MASONRY COURSE
 - 83. REVEAL: MASONRY COURSE
 - 84. REVEAL: MASONRY COURSE
 - 85. REVEAL: MASONRY COURSE
 - 86. REVEAL: MASONRY COURSE
 - 87. REVEAL: MASONRY COURSE
 - 88. REVEAL: MASONRY COURSE
 - 89. REVEAL: MASONRY COURSE
 - 90. REVEAL: MASONRY COURSE
 - 91. REVEAL: MASONRY COURSE
 - 92. REVEAL: MASONRY COURSE
 - 93. REVEAL: MASONRY COURSE
 - 94. REVEAL: MASONRY COURSE
 - 95. REVEAL: MASONRY COURSE
 - 96. REVEAL: MASONRY COURSE
 - 97. REVEAL: MASONRY COURSE
 - 98. REVEAL: MASONRY COURSE
 - 99. REVEAL: MASONRY COURSE
 - 100. REVEAL: MASONRY COURSE

QUALITY ASSURANCE

The project is subject to the Quality Assurance System. Design Development Review for this project is yet to be completed. This document is for the project to be completed. It is not to be used for construction. It is not to be used for construction. It is not to be used for construction.

NOTES

1. Check all dimensions against component of work. This drawing shall be used in conjunction with all other documents including those by other consultants, at building permit stage. It is not to be used for construction. It is not to be used for construction. It is not to be used for construction.

REFERENCES

The following is copyright and the intellectual property of FENDER KATSALIDIS (FK&K) PTY LTD.

SCALE: 1:500@A3

NO.	DATE	CHECKED	DATE	PROJECT	JOB NO.
1	21/11/2017	ALGOSON	23/11/2017	17020	

JOHN ANDREWS BUILDING SHOWN DASHED

PROJECT

32 SMITH ST GPT REDEVELOPMENT
32 SMITH ST 0-95 PHILLIP ST
PARRAMATTA NSW 2150

CLIENT

32 SMITH ST GPT REDEVELOPMENT

DESIGNER

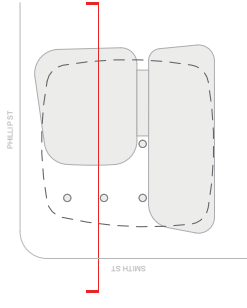
FENDER KATSALIDIS

LEVEL 8
FRANKLIN ST
2000 NSW AUSTRALIA
3500 TELEPHONE

01 - SITE SECTION NORTH / SOUTH
SCALE 1:500@A3

02 - DEVELOPMENT APPLICATION
DA205

REVISION	DATE	BY	CHKD
01	07.02.2017	MS	MS
02	17.02.2017	BB	BB
03	18.02.2017	BB	BB
04	08.02.2017	BB	BB
05	11.02.2017	BB	BB
06	20.02.2017	BB	BB
07	08.12.2017	BB	BB
08	02.02.2018	BB	BB



DATE: 02.02.2018
 CHECKED: [Signature]
 DATE OF PREPARE: 16.03.2017
 DRAWING NO: 17020
 PROJECT: 32 SMITH ST, OPT REDEVELOPMENT
 32 SMITH ST & 93-95 PHILLIP ST
 PARRAMATTA NSW 2150

FENDER KATSALIDIS
 WWW.FKARCHITECTURE.COM
 10/100 COLLEGE STREET
 NEW SOUTH WALES 2000 AUSTRALIA
 TELEPHONE: +61 2 8270 3000
 FAX: +61 2 8270 3002
 A/CN 1006 943 002

QUALITY ASSURANCE (ISSUED CERTIFIED)
 THE PROJECT IS SUBJECT TO THE QUALITY ASSURANCE SYSTEM
 (QAS) OF THE ARCHITECTURE ACT 2006 (NSW)
 THE QAS IS A REGISTERED QUALITY ASSURANCE SYSTEM
 (QAS) OF THE ARCHITECTURE ACT 2006 (NSW)
 THE QAS IS A REGISTERED QUALITY ASSURANCE SYSTEM
 (QAS) OF THE ARCHITECTURE ACT 2006 (NSW)

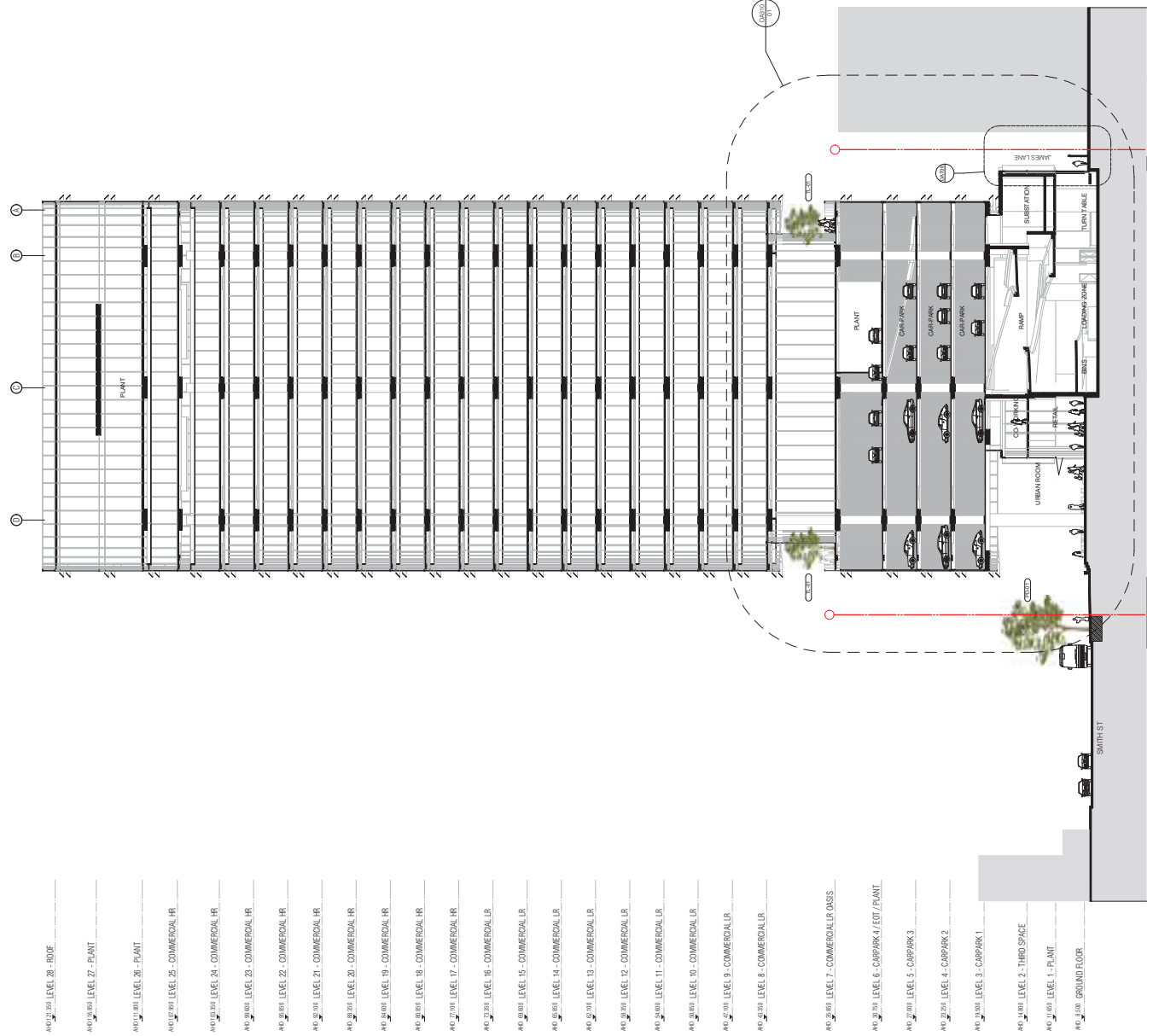
NOTE
 THE DRAWINGS COMPLY WITH THE REQUIREMENTS OF THE BUILDING ACT 2006 (NSW) AND THE BUILDING REGULATIONS 2006 (NSW).
 THE DRAWINGS COMPLY WITH THE REQUIREMENTS OF THE BUILDING ACT 2006 (NSW) AND THE BUILDING REGULATIONS 2006 (NSW).
 THE DRAWINGS COMPLY WITH THE REQUIREMENTS OF THE BUILDING ACT 2006 (NSW) AND THE BUILDING REGULATIONS 2006 (NSW).

DATE 02.02.2018
DATE OF PREPARE 16.03.2017
PROJECT 32 SMITH ST, OPT REDEVELOPMENT
32 SMITH ST & 93-95 PHILLIP ST
PARRAMATTA NSW 2150

DRAWING TITLE
SECTION AA

SCALE 1:500@A3
ISSUE PURPOSE DEVELOPMENT APPLICATION

REV. 07
DA301

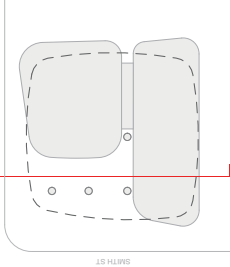


- A10 22.000 LEVEL 26 - PLANT
- A10 21.000 LEVEL 25 - COMMERCIAL HR
- A10 20.000 LEVEL 24 - COMMERCIAL HR
- A10 19.000 LEVEL 23 - COMMERCIAL HR
- A10 18.000 LEVEL 22 - COMMERCIAL HR
- A10 17.000 LEVEL 21 - COMMERCIAL HR
- A10 16.000 LEVEL 20 - COMMERCIAL HR
- A10 15.000 LEVEL 19 - COMMERCIAL HR
- A10 14.000 LEVEL 18 - COMMERCIAL HR
- A10 13.000 LEVEL 17 - COMMERCIAL HR
- A10 12.000 LEVEL 16 - COMMERCIAL LR
- A10 11.000 LEVEL 15 - COMMERCIAL LR
- A10 10.000 LEVEL 14 - COMMERCIAL LR
- A10 9.000 LEVEL 13 - COMMERCIAL LR
- A10 8.000 LEVEL 12 - COMMERCIAL LR
- A10 7.000 LEVEL 11 - COMMERCIAL LR
- A10 6.000 LEVEL 10 - COMMERCIAL LR
- A10 5.000 LEVEL 9 - COMMERCIAL LR
- A10 4.000 LEVEL 8 - COMMERCIAL LR
- A10 3.000 LEVEL 7 - COMMERCIAL LR (GAS)
- A10 2.000 LEVEL 6 - CARPARK 1 / EOT / PLANT
- A10 1.000 LEVEL 5 - CARPARK 3
- A10 0.000 LEVEL 4 - CARPARK 2
- A10 0.000 LEVEL 3 - CARPARK 1
- A10 0.000 LEVEL 2 - THIRD SPACE
- A10 0.000 LEVEL 1 - PLANT
- A10 0.000 GROUND FLOOR

A SECTION AA
 SCALE 1:500@A3

REVISION

NO.	DATE	DESCRIPTION
1	10/10/2017	ISSUE FOR PERMIT
2	10/10/2017	REVISED PERMIT
3	10/10/2017	REVISED PERMIT
4	10/10/2017	REVISED PERMIT
5	10/10/2017	REVISED PERMIT
6	10/10/2017	REVISED PERMIT
7	10/10/2017	REVISED PERMIT
8	10/10/2017	REVISED PERMIT
9	10/10/2017	REVISED PERMIT
10	10/10/2017	REVISED PERMIT
11	10/10/2017	REVISED PERMIT
12	10/10/2017	REVISED PERMIT
13	10/10/2017	REVISED PERMIT
14	10/10/2017	REVISED PERMIT
15	10/10/2017	REVISED PERMIT
16	10/10/2017	REVISED PERMIT
17	10/10/2017	REVISED PERMIT
18	10/10/2017	REVISED PERMIT
19	10/10/2017	REVISED PERMIT
20	10/10/2017	REVISED PERMIT
21	10/10/2017	REVISED PERMIT
22	10/10/2017	REVISED PERMIT
23	10/10/2017	REVISED PERMIT
24	10/10/2017	REVISED PERMIT
25	10/10/2017	REVISED PERMIT
26	10/10/2017	REVISED PERMIT
27	10/10/2017	REVISED PERMIT
28	10/10/2017	REVISED PERMIT
29	10/10/2017	REVISED PERMIT
30	10/10/2017	REVISED PERMIT
31	10/10/2017	REVISED PERMIT
32	10/10/2017	REVISED PERMIT
33	10/10/2017	REVISED PERMIT
34	10/10/2017	REVISED PERMIT
35	10/10/2017	REVISED PERMIT
36	10/10/2017	REVISED PERMIT
37	10/10/2017	REVISED PERMIT
38	10/10/2017	REVISED PERMIT
39	10/10/2017	REVISED PERMIT
40	10/10/2017	REVISED PERMIT
41	10/10/2017	REVISED PERMIT
42	10/10/2017	REVISED PERMIT
43	10/10/2017	REVISED PERMIT
44	10/10/2017	REVISED PERMIT
45	10/10/2017	REVISED PERMIT
46	10/10/2017	REVISED PERMIT
47	10/10/2017	REVISED PERMIT
48	10/10/2017	REVISED PERMIT
49	10/10/2017	REVISED PERMIT
50	10/10/2017	REVISED PERMIT
51	10/10/2017	REVISED PERMIT
52	10/10/2017	REVISED PERMIT
53	10/10/2017	REVISED PERMIT
54	10/10/2017	REVISED PERMIT
55	10/10/2017	REVISED PERMIT
56	10/10/2017	REVISED PERMIT
57	10/10/2017	REVISED PERMIT
58	10/10/2017	REVISED PERMIT
59	10/10/2017	REVISED PERMIT
60	10/10/2017	REVISED PERMIT
61	10/10/2017	REVISED PERMIT
62	10/10/2017	REVISED PERMIT
63	10/10/2017	REVISED PERMIT
64	10/10/2017	REVISED PERMIT
65	10/10/2017	REVISED PERMIT
66	10/10/2017	REVISED PERMIT
67	10/10/2017	REVISED PERMIT
68	10/10/2017	REVISED PERMIT
69	10/10/2017	REVISED PERMIT
70	10/10/2017	REVISED PERMIT
71	10/10/2017	REVISED PERMIT
72	10/10/2017	REVISED PERMIT
73	10/10/2017	REVISED PERMIT
74	10/10/2017	REVISED PERMIT
75	10/10/2017	REVISED PERMIT
76	10/10/2017	REVISED PERMIT
77	10/10/2017	REVISED PERMIT
78	10/10/2017	REVISED PERMIT
79	10/10/2017	REVISED PERMIT
80	10/10/2017	REVISED PERMIT
81	10/10/2017	REVISED PERMIT
82	10/10/2017	REVISED PERMIT
83	10/10/2017	REVISED PERMIT
84	10/10/2017	REVISED PERMIT
85	10/10/2017	REVISED PERMIT
86	10/10/2017	REVISED PERMIT
87	10/10/2017	REVISED PERMIT
88	10/10/2017	REVISED PERMIT
89	10/10/2017	REVISED PERMIT
90	10/10/2017	REVISED PERMIT
91	10/10/2017	REVISED PERMIT
92	10/10/2017	REVISED PERMIT
93	10/10/2017	REVISED PERMIT
94	10/10/2017	REVISED PERMIT
95	10/10/2017	REVISED PERMIT
96	10/10/2017	REVISED PERMIT
97	10/10/2017	REVISED PERMIT
98	10/10/2017	REVISED PERMIT
99	10/10/2017	REVISED PERMIT
100	10/10/2017	REVISED PERMIT



QUALITY ASSURANCE

The project is subject to the Quality Assurance System. Strategic Compliance for this project is yet to be completed. Design Development phase for this project is yet to be completed. Issue documents in respect to this project is yet to be completed. This drawing is a UNCONTROLLED COPY that is to be controlled and kept in accordance with the project requirements.

NOTES

Check for any full dimensions prior to commencement of work. This drawing shall be read in conjunction with all other contract documents including those by other consultants, and including specific clauses. The information on this drawing is to be used in accordance with the project requirements.

This drawing is CONTROLLED and shall remain the property of FENDER KATSALIDIS ARCHITECTS PTY LTD.

QUALITY ASSURANCE

The project is subject to the Quality Assurance System. Strategic Compliance for this project is yet to be completed. Design Development phase for this project is yet to be completed. Issue documents in respect to this project is yet to be completed. This drawing is a UNCONTROLLED COPY that is to be controlled and kept in accordance with the project requirements.

NOTES

Check for any full dimensions prior to commencement of work. This drawing shall be read in conjunction with all other contract documents including those by other consultants, and including specific clauses. The information on this drawing is to be used in accordance with the project requirements.

This drawing is CONTROLLED and shall remain the property of FENDER KATSALIDIS ARCHITECTS PTY LTD.

SCALE

1:500@A3

NO.	DATE	DESIGNED	CHECKED	DATE	PROJECT	JOB NO.
1	06.10.2017	ALICIA CHAN		10.10.2017	11020	
2	10.10.2017	ALICIA CHAN				
3	10.10.2017	ALICIA CHAN				
4	10.10.2017	ALICIA CHAN				
5	10.10.2017	ALICIA CHAN				
6	10.10.2017	ALICIA CHAN				
7	10.10.2017	ALICIA CHAN				
8	10.10.2017	ALICIA CHAN				
9	10.10.2017	ALICIA CHAN				
10	10.10.2017	ALICIA CHAN				
11	10.10.2017	ALICIA CHAN				
12	10.10.2017	ALICIA CHAN				
13	10.10.2017	ALICIA CHAN				
14	10.10.2017	ALICIA CHAN				
15	10.10.2017	ALICIA CHAN				
16	10.10.2017	ALICIA CHAN				
17	10.10.2017	ALICIA CHAN				
18	10.10.2017	ALICIA CHAN				
19	10.10.2017	ALICIA CHAN				
20	10.10.2017	ALICIA CHAN				
21	10.10.2017	ALICIA CHAN				
22	10.10.2017	ALICIA CHAN				
23	10.10.2017	ALICIA CHAN				
24	10.10.2017	ALICIA CHAN				
25	10.10.2017	ALICIA CHAN				
26	10.10.2017	ALICIA CHAN				
27	10.10.2017	ALICIA CHAN				
28	10.10.2017	ALICIA CHAN				
29	10.10.2017	ALICIA CHAN				
30	10.10.2017	ALICIA CHAN				
31	10.10.2017	ALICIA CHAN				
32	10.10.2017	ALICIA CHAN				
33	10.10.2017	ALICIA CHAN				
34	10.10.2017	ALICIA CHAN				
35	10.10.2017	ALICIA CHAN				
36	10.10.2017	ALICIA CHAN				
37	10.10.2017	ALICIA CHAN				
38	10.10.2017	ALICIA CHAN				
39	10.10.2017	ALICIA CHAN				
40	10.10.2017	ALICIA CHAN				
41	10.10.2017	ALICIA CHAN				
42	10.10.2017	ALICIA CHAN				
43	10.10.2017	ALICIA CHAN				
44	10.10.2017	ALICIA CHAN				
45	10.10.2017	ALICIA CHAN				
46	10.10.2017	ALICIA CHAN				
47	10.10.2017	ALICIA CHAN				
48	10.10.2017	ALICIA CHAN				
49	10.10.2017	ALICIA CHAN				
50	10.10.2017	ALICIA CHAN				
51	10.10.2017	ALICIA CHAN				
52	10.10.2017	ALICIA CHAN				
53	10.10.2017	ALICIA CHAN				
54	10.10.2017	ALICIA CHAN				
55	10.10.2017	ALICIA CHAN				
56	10.10.2017	ALICIA CHAN				
57	10.10.2017	ALICIA CHAN				
58	10.10.2017	ALICIA CHAN				
59	10.10.2017	ALICIA CHAN				
60	10.10.2017	ALICIA CHAN				
61	10.10.2017	ALICIA CHAN				
62	10.10.2017	ALICIA CHAN				
63	10.10.2017	ALICIA CHAN				
64	10.10.2017	ALICIA CHAN				
65	10.10.2017	ALICIA CHAN				
66	10.10.2017	ALICIA CHAN				
67	10.10.2017	ALICIA CHAN				
68	10.10.2017	ALICIA CHAN				
69	10.10.2017	ALICIA CHAN				
70	10.10.2017	ALICIA CHAN				
71	10.10.2017	ALICIA CHAN				
72	10.10.2017	ALICIA CHAN				
73	10.10.2017	ALICIA CHAN				
74	10.10.2017	ALICIA CHAN				
75	10.10.2017	ALICIA CHAN				
76	10.10.2017	ALICIA CHAN				
77	10.10.2017	ALICIA CHAN				
78	10.10.2017	ALICIA CHAN				
79	10.10.2017	ALICIA CHAN				
80	10.10.2017	ALICIA CHAN				
81	10.10.2017	ALICIA CHAN				
82	10.10.2017	ALICIA CHAN				
83	10.10.2017	ALICIA CHAN				
84	10.10.2017	ALICIA CHAN				
85	10.10.2017	ALICIA CHAN				
86	10.10.2017	ALICIA CHAN				
87	10.10.2017	ALICIA CHAN				
88	10.10.2017	ALICIA CHAN				
89	10.10.2017	ALICIA CHAN				
90	10.10.2017	ALICIA CHAN				
91	10.10.2017	ALICIA CHAN				
92	10.10.2017	ALICIA CHAN				
93	10.10.2017	ALICIA CHAN				
94	10.10.2017	ALICIA CHAN				
95	10.10.2017	ALICIA CHAN				
96	10.10.2017	ALICIA CHAN				
97	10.10.2017	ALICIA CHAN				
98	10.10.2017	ALICIA CHAN				
99	10.10.2017	ALICIA CHAN				
100	10.10.2017	ALICIA CHAN				

SECTION BB

PROJECT

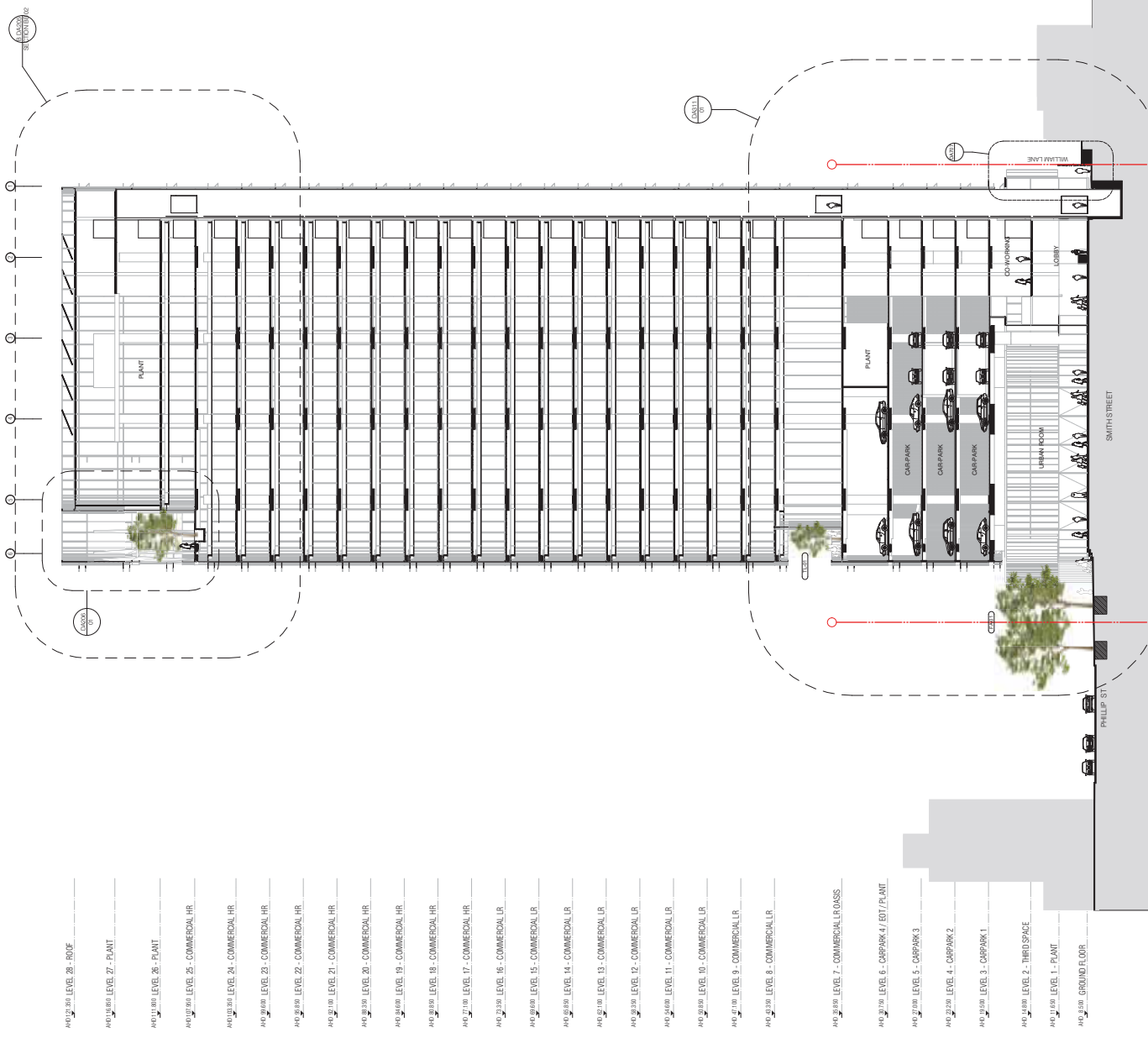
32 SMITH ST GPT REDEVELOPMENT
 32 SMITH ST 6.93.95 PHILLIP ST
 PARRAMATTA NSW 2150

FENDER KATSALIDIS

LEVEL 8 FRAUSTRAILIA.COM
 LEVEL 9 FRAUSTRAILIA.COM SYDNEY
 2000 NSW AUSTRALIA
 01 2 8218 3500 TELEPHONE
 REVISING DRAWING NO.

06 | DEVELOPMENT APPLICATION

DA302

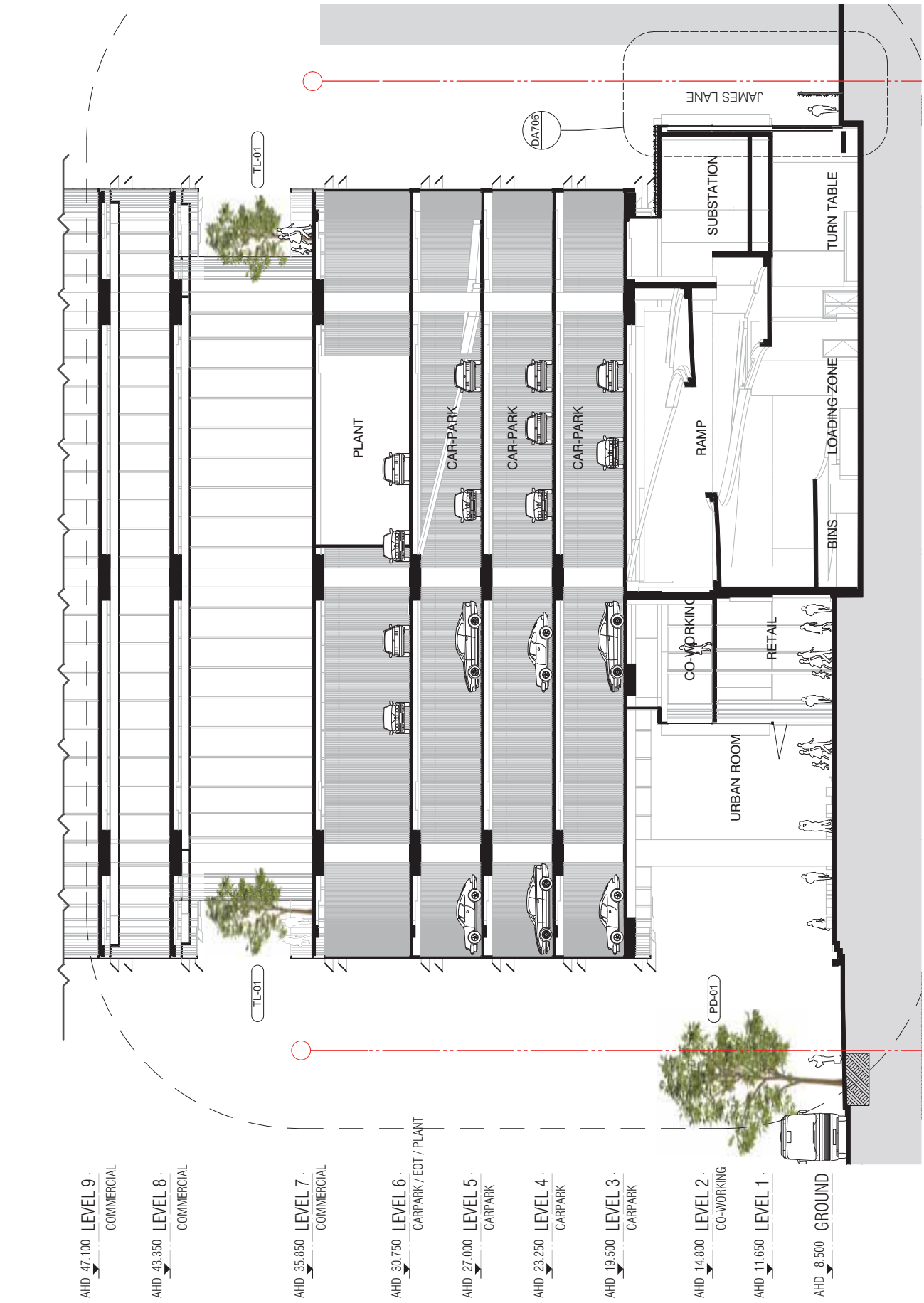
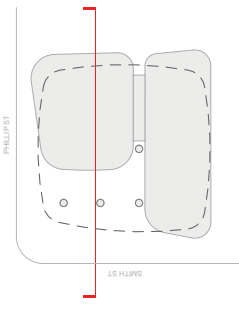


SECTION BB

SCALE 1:500@A3

B

REVISION	DATE	BY	APP'D
01	07.02.2017	BB	BB
02	17.02.2017	BB	BB
03	18.02.2017	BB	BB
04	08.02.2017	BB	BB
05	11.02.2017	BB	BB
06	20.02.2017	BB	BB
07	08.11.2017	BB	BB
08	02.02.2018	BB	BB



A SECTION AA
SCALE: 1:200@A3

FENDER KATSALIDIS
WWW.FKARCHITECTURE.COM
100 COLLEGE STREET, SUITE 101
NEW SOUTH WALES 2000 AUSTRALIA
TELEPHONE: +61 2 8706 3000
FAX: +61 2 8706 3002
A/CN/006/043/002

QUALITY ASSURANCE (ISSUED CERTIFIED)
THE PROJECT IS SUBJECT TO THE FINANCIAL ASSURANCE SYSTEM
SCHEMATIC DESIGN REVIEW FOR THIS PROJECT IS COMPLETE
DESIGN DEVELOPMENT REVIEW FOR THIS PROJECT IS NOT YET COMPLETE
CONSTRUCTION REVIEW FOR THIS PROJECT IS NOT YET COMPLETE
THE DRAWINGS SHOWN ARE UNCONTROLLED COPY PRINTS THAT BE CONSIDERED
INVALID. SUBJECT TO THE FINANCIAL ASSURANCE SYSTEM

NOTE
THE DRAWINGS SHOWN HEREIN SHALL REMAIN THE PROPERTY OF FENDER KATSALIDIS PVT LTD
CHECK AND VERIFY ALL DIMENSIONS IN USE FOR COMMERCIAL WORK DRAWING TO BE MADE
IN ACCORDANCE WITH ALL OTHER CONTRACT DOCUMENTS AND THE SCALE DIMENSIONS USE THE
DIMENSIONS AS SHOWN ON THE DRAWINGS UNLESS OTHERWISE SPECIFIED.
THE DRAWINGS SHOWN ARE UNCONTROLLED COPY PRINTS THAT BE CONSIDERED
INVALID. SUBJECT TO THE FINANCIAL ASSURANCE SYSTEM

DATE 02.02.2018
DATE 01.02.2018
DATE 17.02.2018

PROJECT
32 SMITH ST, OPT REDEVELOPMENT
32 SMITH ST & 93-95 PHILLIP ST
PARRAMATTA NSW 2150

DRAWING TITLE
PODIUM SECTION AA

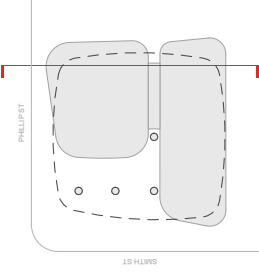
SCALE
1:200@A3

REV.
07

DA310

REVISION

NO.	DATE	DESCRIPTION
1	12/10/2017	ISSUE FOR PERMIT
2	12/10/2017	ISSUE FOR PERMIT
3	12/10/2017	ISSUE FOR PERMIT
4	12/10/2017	ISSUE FOR PERMIT
5	12/10/2017	ISSUE FOR PERMIT
6	12/10/2017	ISSUE FOR PERMIT
7	12/10/2017	ISSUE FOR PERMIT
8	12/10/2017	ISSUE FOR PERMIT
9	12/10/2017	ISSUE FOR PERMIT
10	12/10/2017	ISSUE FOR PERMIT
11	12/10/2017	ISSUE FOR PERMIT
12	12/10/2017	ISSUE FOR PERMIT
13	12/10/2017	ISSUE FOR PERMIT
14	12/10/2017	ISSUE FOR PERMIT
15	12/10/2017	ISSUE FOR PERMIT
16	12/10/2017	ISSUE FOR PERMIT
17	12/10/2017	ISSUE FOR PERMIT
18	12/10/2017	ISSUE FOR PERMIT
19	12/10/2017	ISSUE FOR PERMIT
20	12/10/2017	ISSUE FOR PERMIT
21	12/10/2017	ISSUE FOR PERMIT
22	12/10/2017	ISSUE FOR PERMIT
23	12/10/2017	ISSUE FOR PERMIT
24	12/10/2017	ISSUE FOR PERMIT
25	12/10/2017	ISSUE FOR PERMIT
26	12/10/2017	ISSUE FOR PERMIT
27	12/10/2017	ISSUE FOR PERMIT
28	12/10/2017	ISSUE FOR PERMIT
29	12/10/2017	ISSUE FOR PERMIT
30	12/10/2017	ISSUE FOR PERMIT
31	12/10/2017	ISSUE FOR PERMIT
32	12/10/2017	ISSUE FOR PERMIT
33	12/10/2017	ISSUE FOR PERMIT
34	12/10/2017	ISSUE FOR PERMIT
35	12/10/2017	ISSUE FOR PERMIT
36	12/10/2017	ISSUE FOR PERMIT
37	12/10/2017	ISSUE FOR PERMIT
38	12/10/2017	ISSUE FOR PERMIT
39	12/10/2017	ISSUE FOR PERMIT
40	12/10/2017	ISSUE FOR PERMIT
41	12/10/2017	ISSUE FOR PERMIT
42	12/10/2017	ISSUE FOR PERMIT
43	12/10/2017	ISSUE FOR PERMIT
44	12/10/2017	ISSUE FOR PERMIT
45	12/10/2017	ISSUE FOR PERMIT
46	12/10/2017	ISSUE FOR PERMIT
47	12/10/2017	ISSUE FOR PERMIT
48	12/10/2017	ISSUE FOR PERMIT
49	12/10/2017	ISSUE FOR PERMIT
50	12/10/2017	ISSUE FOR PERMIT
51	12/10/2017	ISSUE FOR PERMIT
52	12/10/2017	ISSUE FOR PERMIT
53	12/10/2017	ISSUE FOR PERMIT
54	12/10/2017	ISSUE FOR PERMIT
55	12/10/2017	ISSUE FOR PERMIT
56	12/10/2017	ISSUE FOR PERMIT
57	12/10/2017	ISSUE FOR PERMIT
58	12/10/2017	ISSUE FOR PERMIT
59	12/10/2017	ISSUE FOR PERMIT
60	12/10/2017	ISSUE FOR PERMIT
61	12/10/2017	ISSUE FOR PERMIT
62	12/10/2017	ISSUE FOR PERMIT
63	12/10/2017	ISSUE FOR PERMIT
64	12/10/2017	ISSUE FOR PERMIT
65	12/10/2017	ISSUE FOR PERMIT
66	12/10/2017	ISSUE FOR PERMIT
67	12/10/2017	ISSUE FOR PERMIT
68	12/10/2017	ISSUE FOR PERMIT
69	12/10/2017	ISSUE FOR PERMIT
70	12/10/2017	ISSUE FOR PERMIT
71	12/10/2017	ISSUE FOR PERMIT
72	12/10/2017	ISSUE FOR PERMIT
73	12/10/2017	ISSUE FOR PERMIT
74	12/10/2017	ISSUE FOR PERMIT
75	12/10/2017	ISSUE FOR PERMIT
76	12/10/2017	ISSUE FOR PERMIT
77	12/10/2017	ISSUE FOR PERMIT
78	12/10/2017	ISSUE FOR PERMIT
79	12/10/2017	ISSUE FOR PERMIT
80	12/10/2017	ISSUE FOR PERMIT
81	12/10/2017	ISSUE FOR PERMIT
82	12/10/2017	ISSUE FOR PERMIT
83	12/10/2017	ISSUE FOR PERMIT
84	12/10/2017	ISSUE FOR PERMIT
85	12/10/2017	ISSUE FOR PERMIT
86	12/10/2017	ISSUE FOR PERMIT
87	12/10/2017	ISSUE FOR PERMIT
88	12/10/2017	ISSUE FOR PERMIT
89	12/10/2017	ISSUE FOR PERMIT
90	12/10/2017	ISSUE FOR PERMIT
91	12/10/2017	ISSUE FOR PERMIT
92	12/10/2017	ISSUE FOR PERMIT
93	12/10/2017	ISSUE FOR PERMIT
94	12/10/2017	ISSUE FOR PERMIT
95	12/10/2017	ISSUE FOR PERMIT
96	12/10/2017	ISSUE FOR PERMIT
97	12/10/2017	ISSUE FOR PERMIT
98	12/10/2017	ISSUE FOR PERMIT
99	12/10/2017	ISSUE FOR PERMIT
100	12/10/2017	ISSUE FOR PERMIT



QUALITY ASSURANCE
 The project is subject to the Quality Assurance System.
 System Compliance for this project is yet to be completed.
 Design Development Review for this project is yet to be completed.
 Final Documentation Review for this project is yet to be completed.
 This drawing is a sample UNCONTROLLED COPY that is for information only. A separate drawing should refer to the latest version of this drawing.

NOTES
 Check all key dimensions against component of work. This drawing shall be read in conjunction with all other current documents including those by other consultants, and including specialist clauses. Any amendments shall be made in accordance with the latest approved drawings.

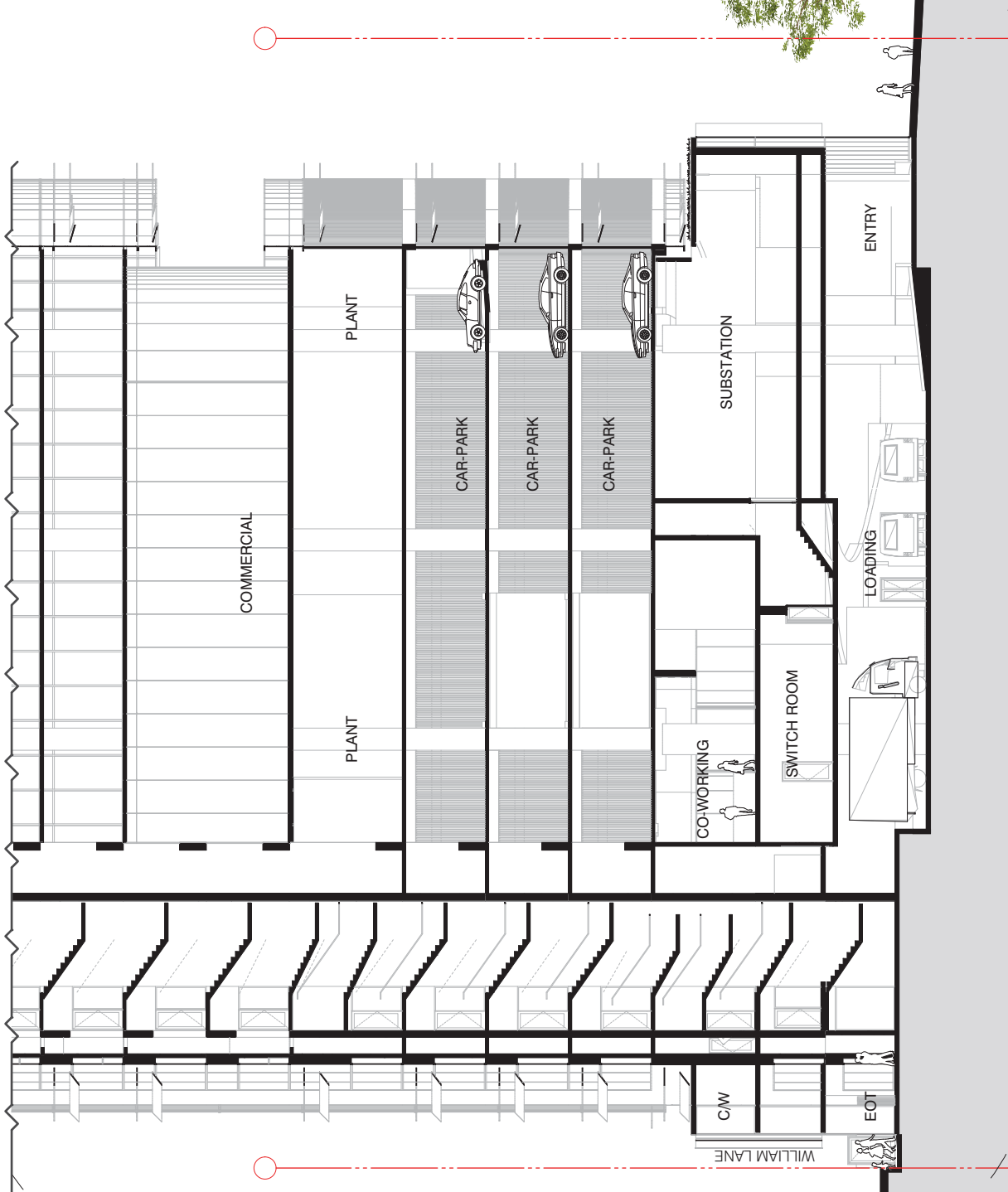
This drawing is CONTROLLED and shall remain the property of FENDER KATSALIDIS ARCHITECTS PTY LTD.



DESIGNER	1:200@A3		
PROJECT	DATE	CHECKED	DATE
32 SMITH ST GPT REDEVELOPMENT	06.10.2017	ALC/SONN	12.10.2017
32 SMITH ST 6-9, 95 PHILLIP ST			
PARRAMATTA NSW 2150			
DRAWING TITLE	PODIUM SECTION CC		

PROJECT
 32 SMITH ST GPT REDEVELOPMENT
 32 SMITH ST 6-9, 95 PHILLIP ST
 PARRAMATTA NSW 2150

FENDER KATSALIDIS
 ARCHITECTS PTY LTD
 LEVEL 8 FKAUSTRALIA.COM SYDNEY
 2000 NSW AUSTRALIA
 01 2 8218 3500 TELEPHONE
 REVISING DRAWING NO.

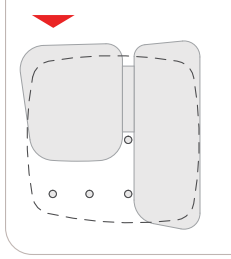


- AHD 43.350 LEVEL 8 COMMERCIAL
- AHD 35.850 LEVEL 7 COMMERCIAL
- AHD 30.750 LEVEL 6 CARPARK / EOT / PLANT
- AHD 27.000 LEVEL 5 CARPARK
- AHD 23.250 LEVEL 4 CARPARK
- AHD 19.500 LEVEL 3 CARPARK
- AHD 14.800 LEVEL 2 CO-WORKING
- AHD 11.650 LEVEL 1 PLANT
- AHD 8.500 GROUND

SECTION CC
 SCALE 1:200@A3



NO.	REVISION
1	Issue for approval
2	Issue for approval
3	Issue for approval
4	Issue for approval
5	Issue for approval
6	Issue for approval
7	Issue for approval
8	Issue for approval
9	Issue for approval
10	Issue for approval
11	Issue for approval
12	Issue for approval
13	Issue for approval
14	Issue for approval
15	Issue for approval
16	Issue for approval
17	Issue for approval
18	Issue for approval
19	Issue for approval
20	Issue for approval
21	Issue for approval
22	Issue for approval
23	Issue for approval
24	Issue for approval
25	Issue for approval
26	Issue for approval
27	Issue for approval
28	Issue for approval
29	Issue for approval
30	Issue for approval
31	Issue for approval
32	Issue for approval
33	Issue for approval
34	Issue for approval
35	Issue for approval
36	Issue for approval
37	Issue for approval
38	Issue for approval
39	Issue for approval
40	Issue for approval
41	Issue for approval
42	Issue for approval
43	Issue for approval
44	Issue for approval
45	Issue for approval
46	Issue for approval
47	Issue for approval
48	Issue for approval
49	Issue for approval
50	Issue for approval



- REVISION**
- 1. Issue for approval
 - 2. Issue for approval
 - 3. Issue for approval
 - 4. Issue for approval
 - 5. Issue for approval
 - 6. Issue for approval
 - 7. Issue for approval
 - 8. Issue for approval
 - 9. Issue for approval
 - 10. Issue for approval
 - 11. Issue for approval
 - 12. Issue for approval
 - 13. Issue for approval
 - 14. Issue for approval
 - 15. Issue for approval
 - 16. Issue for approval
 - 17. Issue for approval
 - 18. Issue for approval
 - 19. Issue for approval
 - 20. Issue for approval
 - 21. Issue for approval
 - 22. Issue for approval
 - 23. Issue for approval
 - 24. Issue for approval
 - 25. Issue for approval
 - 26. Issue for approval
 - 27. Issue for approval
 - 28. Issue for approval
 - 29. Issue for approval
 - 30. Issue for approval
 - 31. Issue for approval
 - 32. Issue for approval
 - 33. Issue for approval
 - 34. Issue for approval
 - 35. Issue for approval
 - 36. Issue for approval
 - 37. Issue for approval
 - 38. Issue for approval
 - 39. Issue for approval
 - 40. Issue for approval
 - 41. Issue for approval
 - 42. Issue for approval
 - 43. Issue for approval
 - 44. Issue for approval
 - 45. Issue for approval
 - 46. Issue for approval
 - 47. Issue for approval
 - 48. Issue for approval
 - 49. Issue for approval
 - 50. Issue for approval

QUALITY ASSURANCE

The project is subject to the Quality Assurance System. Design Development for this project is yet to be completed. Your involvement in this project is yet to be completed. This drawing is a working document and is not for construction. All dimensions are in millimeters unless otherwise stated.

NOTES

Check all dimensions against component sheets. This drawing shall be used in conjunction with all other drawings including those by other consultants, including specialist contractors. All dimensions are in millimeters unless otherwise stated.

REFERENCES

AS/NZS 1170:2009 Structural Design Actions Part 1: Dead and Imposed Loads

NO.	DATE	BY	CHECKED	DATE	BY
1	21/11/2017	J. KATSAKIS	J. KATSAKIS	21/11/2017	J. KATSAKIS

PROJECT

32 SMITH ST GPT REDEVELOPMENT
32 SMITH ST G43, G46, G49, G48, G47, G45, G42, G41, G10, G11, G12, G13, G14, G15, G16, G17, G18, G19, G20, G21, G22, G23, G24, G25, G26, G27, G28, G29, G30, G31, G32, G33, G34, G35, G36, G37, G38, G39, G40, G41, G42, G43, G44, G45, G46, G47, G48, G49, G50, G51, G52, G53, G54, G55, G56, G57, G58, G59, G60, G61, G62, G63, G64, G65, G66, G67, G68, G69, G70, G71, G72, G73, G74, G75, G76, G77, G78, G79, G80, G81, G82, G83, G84, G85, G86, G87, G88, G89, G90, G91, G92, G93, G94, G95, G96, G97, G98, G99, G100

PODIUM ELEVATION - EAST

FENDER KATSAKIS

LEVEL 8 FRAUSTRAILIA.COM
2000 NSW AUSTRALIA
9216 3500 TELEPHONE

07 DEVELOPMENT APPLICATION DA212



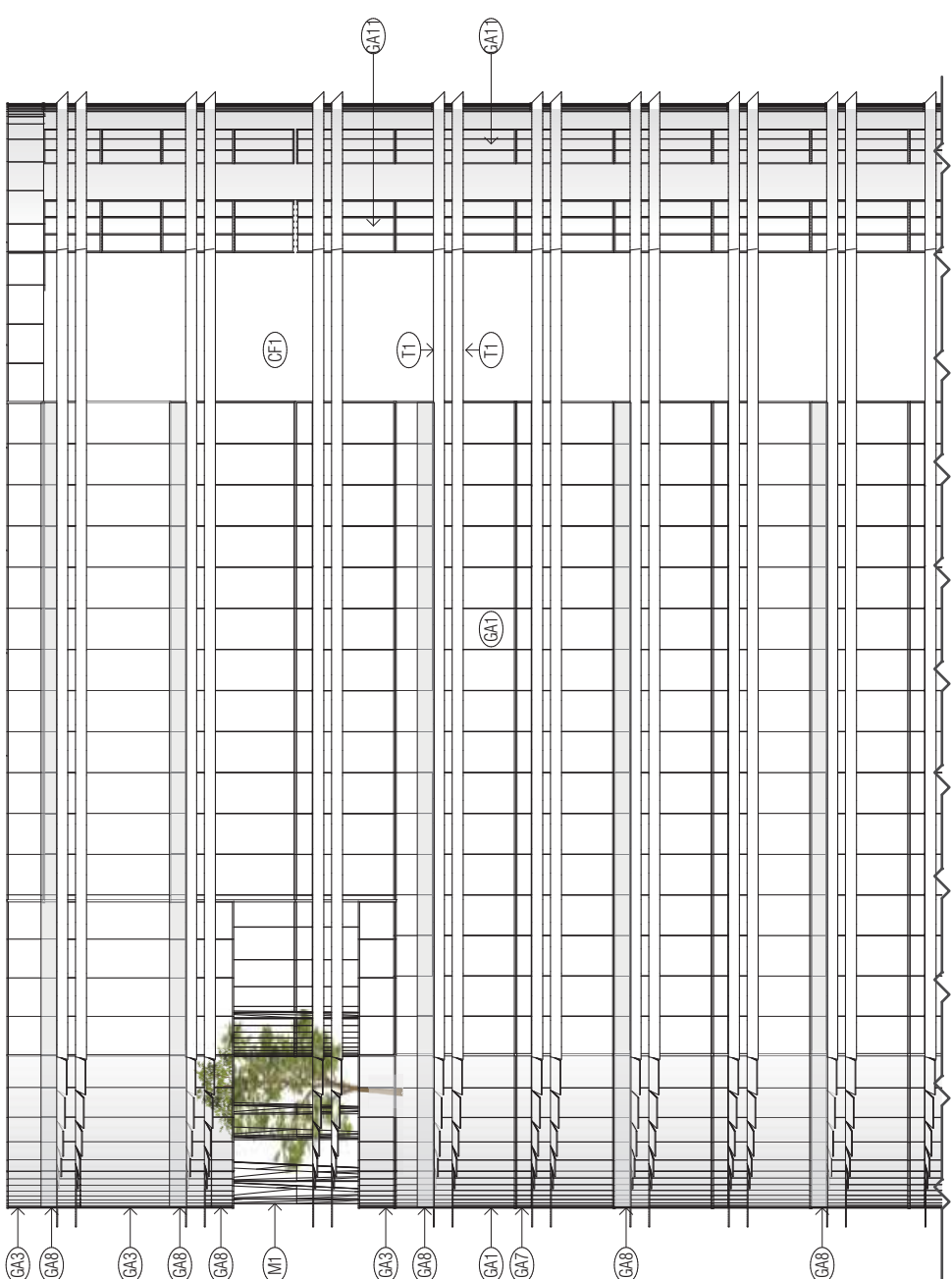
JAMES LANE

E EAST ELEVATION (DA)
SCALE: 1:200@A3

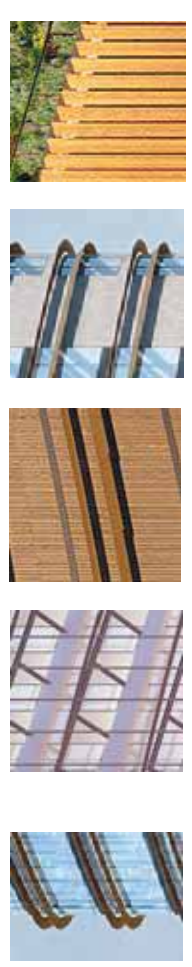


G41, G43, G44, G46, G49, G48 G10, G11, G42, G45, G47 T1, T3, G48 CF1, CF2 T2

AHD 121.350 LEVEL 28 - 3.50
 AHD 116.850 LEVEL 27 - 4.500
 AHD 111.800 LEVEL 26 - 5.050
 AHD 107.950 LEVEL 25 - 3.850
 AHD 103.350 LEVEL 24 - 4.600
 AHD 99.600 LEVEL 23 - 3.750
 AHD 95.850 LEVEL 22 - 3.750
 AHD 92.100 LEVEL 21 - 3.750
 AHD 88.350 LEVEL 20 - 3.750



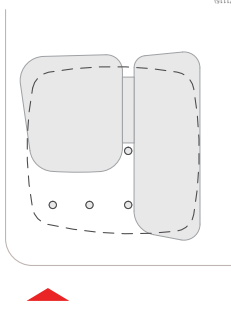
WEST ELEVATION (DA)
 SCALE 1:200@A3



GA1, GA3, GA4, GA6, GA8, GA9
 GA10, GA11, GA2, GA5, GA7
 T1, T3, GA8
 CF1, CF2
 T2

REVISION

NO.	DATE	DESCRIPTION
1		
2		
3		
4		
5		



- EXTERIOR MATERIALS LEGEND**
- 1. POLISHED CONCRETE
 - 2. POLISHED CONCRETE
 - 3. POLISHED CONCRETE
 - 4. POLISHED CONCRETE
 - 5. POLISHED CONCRETE
 - 6. POLISHED CONCRETE
 - 7. POLISHED CONCRETE
 - 8. POLISHED CONCRETE
 - 9. POLISHED CONCRETE
 - 10. POLISHED CONCRETE
 - 11. POLISHED CONCRETE
 - 12. POLISHED CONCRETE
 - 13. POLISHED CONCRETE
 - 14. POLISHED CONCRETE
 - 15. POLISHED CONCRETE
 - 16. POLISHED CONCRETE
 - 17. POLISHED CONCRETE
 - 18. POLISHED CONCRETE
 - 19. POLISHED CONCRETE
 - 20. POLISHED CONCRETE
 - 21. POLISHED CONCRETE
 - 22. POLISHED CONCRETE
 - 23. POLISHED CONCRETE
 - 24. POLISHED CONCRETE
 - 25. POLISHED CONCRETE
 - 26. POLISHED CONCRETE
 - 27. POLISHED CONCRETE
 - 28. POLISHED CONCRETE
 - 29. POLISHED CONCRETE
 - 30. POLISHED CONCRETE
 - 31. POLISHED CONCRETE
 - 32. POLISHED CONCRETE
 - 33. POLISHED CONCRETE
 - 34. POLISHED CONCRETE
 - 35. POLISHED CONCRETE
 - 36. POLISHED CONCRETE
 - 37. POLISHED CONCRETE
 - 38. POLISHED CONCRETE
 - 39. POLISHED CONCRETE
 - 40. POLISHED CONCRETE
 - 41. POLISHED CONCRETE
 - 42. POLISHED CONCRETE
 - 43. POLISHED CONCRETE
 - 44. POLISHED CONCRETE
 - 45. POLISHED CONCRETE
 - 46. POLISHED CONCRETE
 - 47. POLISHED CONCRETE
 - 48. POLISHED CONCRETE
 - 49. POLISHED CONCRETE
 - 50. POLISHED CONCRETE
 - 51. POLISHED CONCRETE
 - 52. POLISHED CONCRETE
 - 53. POLISHED CONCRETE
 - 54. POLISHED CONCRETE
 - 55. POLISHED CONCRETE
 - 56. POLISHED CONCRETE
 - 57. POLISHED CONCRETE
 - 58. POLISHED CONCRETE
 - 59. POLISHED CONCRETE
 - 60. POLISHED CONCRETE
 - 61. POLISHED CONCRETE
 - 62. POLISHED CONCRETE
 - 63. POLISHED CONCRETE
 - 64. POLISHED CONCRETE
 - 65. POLISHED CONCRETE
 - 66. POLISHED CONCRETE
 - 67. POLISHED CONCRETE
 - 68. POLISHED CONCRETE
 - 69. POLISHED CONCRETE
 - 70. POLISHED CONCRETE
 - 71. POLISHED CONCRETE
 - 72. POLISHED CONCRETE
 - 73. POLISHED CONCRETE
 - 74. POLISHED CONCRETE
 - 75. POLISHED CONCRETE
 - 76. POLISHED CONCRETE
 - 77. POLISHED CONCRETE
 - 78. POLISHED CONCRETE
 - 79. POLISHED CONCRETE
 - 80. POLISHED CONCRETE
 - 81. POLISHED CONCRETE
 - 82. POLISHED CONCRETE
 - 83. POLISHED CONCRETE
 - 84. POLISHED CONCRETE
 - 85. POLISHED CONCRETE
 - 86. POLISHED CONCRETE
 - 87. POLISHED CONCRETE
 - 88. POLISHED CONCRETE
 - 89. POLISHED CONCRETE
 - 90. POLISHED CONCRETE
 - 91. POLISHED CONCRETE
 - 92. POLISHED CONCRETE
 - 93. POLISHED CONCRETE
 - 94. POLISHED CONCRETE
 - 95. POLISHED CONCRETE
 - 96. POLISHED CONCRETE
 - 97. POLISHED CONCRETE
 - 98. POLISHED CONCRETE
 - 99. POLISHED CONCRETE
 - 100. POLISHED CONCRETE

QUALITY ASSURANCE

The project is subject to the Quality Assurance System. Design Development for this project is not to be completed. This document is for the project to be completed. This drawing is for the project to be completed. This drawing is for the project to be completed.

NOTES

Check all wall dimensions against component of each. This drawing shall be used in conjunction with all other documents including those by other consultants, at the project's expense. The information in this drawing is for the project to be completed.

SCALE
1:200@A3

NO.	DATE	CHECKED	DATE	NO.	DATE
1	21.11.2017	ALCANTARA	21.11.2017	1	2020
2					
3					
4					
5					
6					
7					
8					
9					
10					
11					
12					
13					
14					
15					
16					
17					
18					
19					
20					
21					
22					
23					
24					
25					
26					
27					
28					
29					
30					
31					
32					
33					
34					
35					
36					
37					
38					
39					
40					
41					
42					
43					
44					
45					
46					
47					
48					
49					
50					
51					
52					
53					
54					
55					
56					
57					
58					
59					
60					
61					
62					
63					
64					
65					
66					
67					
68					
69					
70					
71					
72					
73					
74					
75					
76					
77					
78					
79					
80					
81					
82					
83					
84					
85					
86					
87					
88					
89					
90					
91					
92					
93					
94					
95					
96					
97					
98					
99					
100					

PROJECT

32 SMITH ST. GPT REDEVELOPMENT
 32 SMITH ST. GPT REDEVELOPMENT
 PARRAMATTA NSW 2150

FENDER KATSALIDIS

LEVEL 8 FKAUSTRALIA.COM SYDNEY
 2000 NSW AUSTRALIA
 01 2 8218 3500 TELEPHONE
 REVISING DRAWING NO.

07 DEVELOPMENT APPLICATION

DA220

AHD 121.350 LEVEL 28 - ROOF

AHD 116.850 LEVEL 27 - PLANT

AHD 111.800 LEVEL 26 - PLANT

AHD 107.950 LEVEL 25 - COMMERCIAL HR

AHD 103.350 LEVEL 24 - COMMERCIAL HR

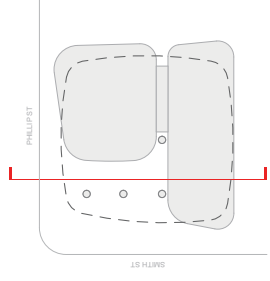
AHD 99.600 LEVEL 23 - COMMERCIAL HR

AHD 95.850 LEVEL 22 - COMMERCIAL HR

AHD 92.100 LEVEL 21 - COMMERCIAL HR

DA206
01

B SECTION BB
SCALE 1:200@A3



REVISION

NO.	DATE	DESCRIPTION
01	10/10/2017	ISSUE FOR PERMIT
02	10/10/2017	REVISED PERMIT
03	10/10/2017	REVISED PERMIT
04	10/10/2017	REVISED PERMIT
05	10/10/2017	REVISED PERMIT
06	10/10/2017	REVISED PERMIT
07	10/10/2017	REVISED PERMIT
08	10/10/2017	REVISED PERMIT
09	10/10/2017	REVISED PERMIT
10	10/10/2017	REVISED PERMIT
11	10/10/2017	REVISED PERMIT
12	10/10/2017	REVISED PERMIT
13	10/10/2017	REVISED PERMIT
14	10/10/2017	REVISED PERMIT
15	10/10/2017	REVISED PERMIT
16	10/10/2017	REVISED PERMIT
17	10/10/2017	REVISED PERMIT
18	10/10/2017	REVISED PERMIT
19	10/10/2017	REVISED PERMIT
20	10/10/2017	REVISED PERMIT
21	10/10/2017	REVISED PERMIT
22	10/10/2017	REVISED PERMIT
23	10/10/2017	REVISED PERMIT
24	10/10/2017	REVISED PERMIT
25	10/10/2017	REVISED PERMIT
26	10/10/2017	REVISED PERMIT
27	10/10/2017	REVISED PERMIT
28	10/10/2017	REVISED PERMIT
29	10/10/2017	REVISED PERMIT
30	10/10/2017	REVISED PERMIT
31	10/10/2017	REVISED PERMIT
32	10/10/2017	REVISED PERMIT
33	10/10/2017	REVISED PERMIT
34	10/10/2017	REVISED PERMIT
35	10/10/2017	REVISED PERMIT
36	10/10/2017	REVISED PERMIT
37	10/10/2017	REVISED PERMIT
38	10/10/2017	REVISED PERMIT
39	10/10/2017	REVISED PERMIT
40	10/10/2017	REVISED PERMIT
41	10/10/2017	REVISED PERMIT
42	10/10/2017	REVISED PERMIT
43	10/10/2017	REVISED PERMIT
44	10/10/2017	REVISED PERMIT
45	10/10/2017	REVISED PERMIT
46	10/10/2017	REVISED PERMIT
47	10/10/2017	REVISED PERMIT
48	10/10/2017	REVISED PERMIT
49	10/10/2017	REVISED PERMIT
50	10/10/2017	REVISED PERMIT

QUALITY ASSURANCE

The project is subject to the Quality Assurance System. Design Development for this project is yet to be completed. Your documentation for this project is yet to be completed. This drawing is a STAMPED COPY that is to be used for construction without modification.

NOTES

Check all vertical dimensions against component of work. This drawing shall be read in conjunction with all other drawings including those by other consultants, at all applicable scales. Dimensions are all in millimetres unless otherwise stated.

This drawing is COPYRIGHT and the intellectual property of FENDER KATSALIDIS ARCHITECTS PTY LTD.

SCALE

1:200@A3

NO.	DATE	CHECKED	DESIGNED	DATE	NO.
1	06/10/2017	ALC/SONN	10/10/2017	10/2020	
2					
3					
4					
5					
6					
7					
8					
9					
10					
11					
12					
13					
14					
15					
16					
17					
18					
19					
20					
21					
22					
23					
24					
25					
26					
27					
28					
29					
30					
31					
32					
33					
34					
35					
36					
37					
38					
39					
40					
41					
42					
43					
44					
45					
46					
47					
48					
49					
50					

PROJECT TITLE

ROOF TOP SECTION BB

PROJECT

32 SMITH ST GPT REDEVELOPMENT
32 SMITH ST 6-9, 95 PHILLIP ST
PARRAMATTA NSW 2150

FENDER KATSALIDIS

LEVEL 8 FKAUSTRALIA.COM
2000 NSW AUSTRALIA
91 2 9218 3500 TELEPHONE

06 | DEVELOPMENT APPLICATION

DA320